

802 LUNA

MANSFIELD®


Vitreous China, Above Counter Vessel

FEATURES

- 17-1/2" round, above counter vessel
- 13-3/16" x 9-7/8" basin
- Mansfield® limited lifetime warranty
- Available in White



COMPONENTS


MODEL #	DESCRIPTION	CODES/STANDARDS
802	Round, above counter vessel. Less faucet, drain assembly and supply.	

802 LUNA



Vitreous China, Above Counter Vessel

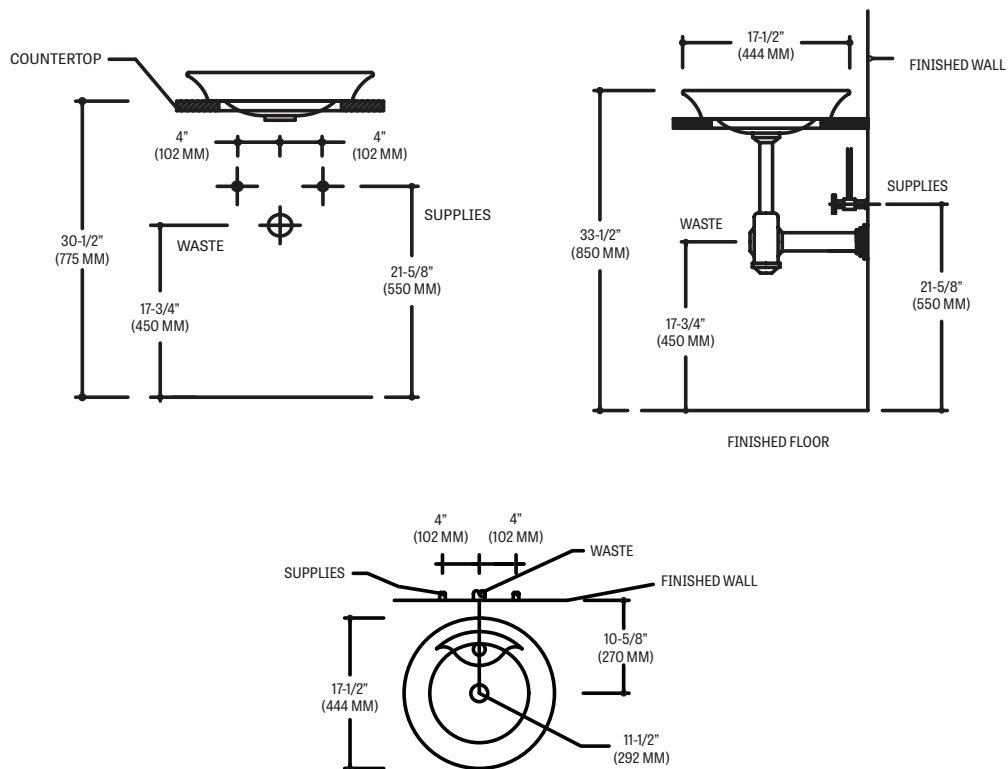
SPECIFICATIONS

MODEL #	DESCRIPTION	CODES/STANDARDS
802	Round, above counter vessel	

MATERIAL	Vitreous China	SHIPPING WEIGHT	23 lbs. (10 kg)
WARRANTY	Vitreous China - Limited Lifetime		

TECHNICAL INFORMATION

Note: these dimensions are nominal and subject to change without notice.



Fixture performance and specifications meet or exceed ASME A112.19.2-2013/CSA B45.1-13 standards, and other state and local codes.