

Model 6028C

PRO-FIT® 4268 OV CD

Oval Whirlpool



Features


- 68" x 42" x 19-3/4" Oval whirlpool
- Six powerful Ultra-Swirl jets
- Dual air knobs for total jet control
- Limited One-Year Warranty
- Available in standard colors: white, almond, biscuit and bone



Model 6028C
(Shown with trim upgrade
and Lift and Turn drain)



Options

Lift and Turn Drain

PF1320	Polished Chrome	
PF1321	Everbrass (PVD)	
PF1322	Brushed Nickel	
PF1323	Oil Rubbed Bronze	

Whirlpool Option

Metal Trim

Model #	Description		Model #	Description	
PF1335	Polished Chrome		SWP151	In-line Water Heater	
PF1336	Everbrass (PVD)				
PF1337	Brushed Nickel				
PF1338	Oil Rubbed Bronze				



MADE IN USA




Model 6028C

PRO-FIT® 4268 OV CD

Oval Whirlpool

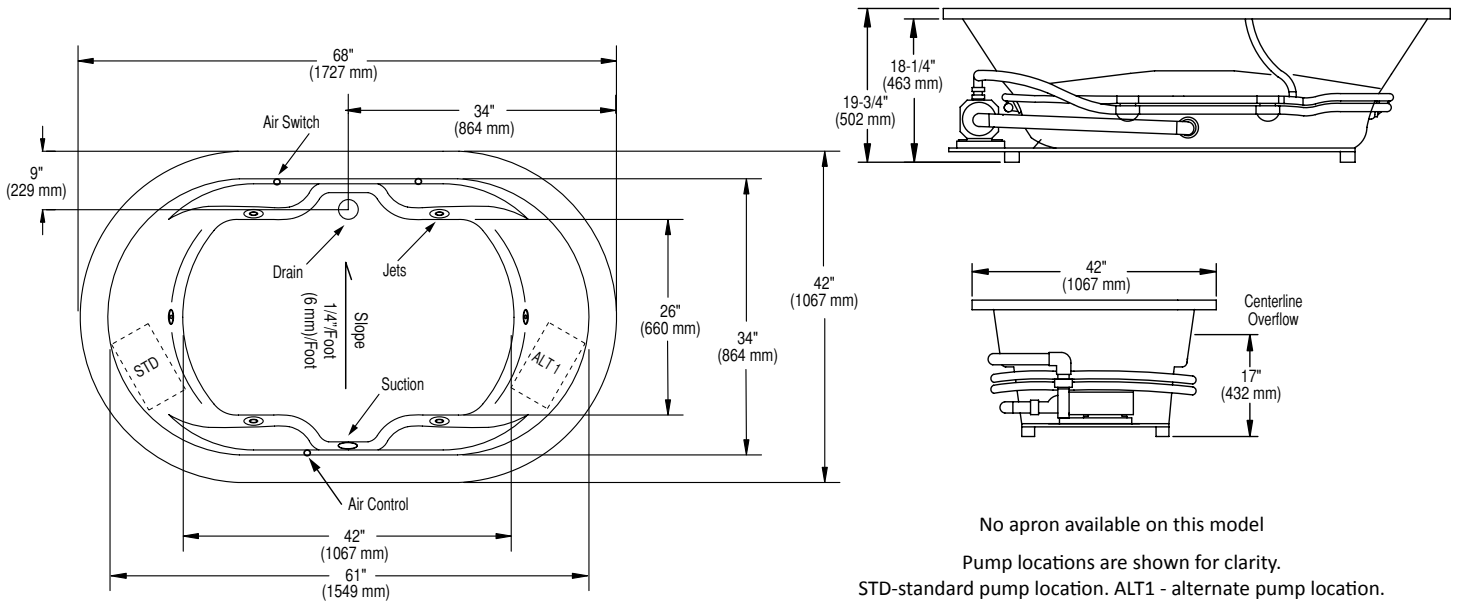


Specifications

Model #	Description	Codes/Standards
6028C	68" x 42" x 19-3/4" Oval whirlpool	  

Specification	Description	Specification	Description
Material	Acrylic, fiberglass reinforced	Number of Jets	6
Construction	Self-contained, pre-plumbed whirlpool bath mounted on a pre-leveled base	Water Capacity	32 gal. (min.) / 65 gal. (max.)
Pump Motor	Single speed, 120 volt, 60 HZ, 5.8 amp, premounted	Floor Loading Weight	47 lbs. / sq. ft. (229 kg/m ²)
Electrical Requirements	120 volt, 15 AMP, GFCI protected circuit	Shipping Weight	whirlpool - 158 lbs.
On/Off Control	Air Switch	Warranty	Limited One Year

Technical Information



No apron available on this model

Pump locations are shown for clarity.

STD-standard pump location. ALT1 - alternate pump location.

Installer Note: Due to the freeform shape of the tub shell, it is recommended that the tub be on the jobsite before making the final cut-out for drop-in installation.

Notes: Measurements may vary 1/4" (+/-)

Install this product according to the installation guide.

These dimensions are nominal and subject to change without notice.

When tested for compliance to the requirements of ASME A112.19.7M for "Whirlpool Bath Appliances" and ANSI Z124.1.2M "American National Standard for Plastic Bathtub and Shower Units", the tested units are found to comply and are acceptable for listing under IAPMO R & T.

Certified for permanent electrical connection only.

Please visit our website to view IAPMO certification information – www.mansfieldplumbing.com



MADE IN USA