

147-119

EcoQuantum®

Elongated Front, Vitreous China, Two-Piece Toilet



Features

- High performance, high efficiency (HET), pressure-assist, dual flush technology
- “Dual action” trip lever
 - Push down for high efficiency flush 1.1 gpf / 4.0 lpf
 - Pull up for full flush 1.6 gpf / 6.0 lpf
- SAVES up to 40% more water than conventional 1.6 gpf flushing systems
- Elongated front bowl
- 12" rough-in
- 2-1/8" glazed trapway
- Model 50 chrome-plated metal trip lever
- The Mansfield® limited lifetime warranty
- Available in White and Standard Colors: Biscuit and Bone






Elongated Front



Model 147-119
Toilet seat not included

Components

Model #	Description	Codes/Standards
147-119	Elongated front, two-piece dual flush pressure-assist toilet. Less toilet seat and supply. Specify color.	  
147	Elongated front, toilet bowl only. Less toilet seat. Specify color.	
119	Dual Flush, pressure-assist tank and cover only with left hand, chrome-plated metal trip lever. Less supply. Specify color.	
119RH	Same as model 119, except with right hand chrome-plated, metal trip lever.	
119CL	Same as model 119, except with cover lock.	



MADE IN USA




147-119

EcoQuantum®

Elongated Front, Vitreous China, Two-Piece Toilet

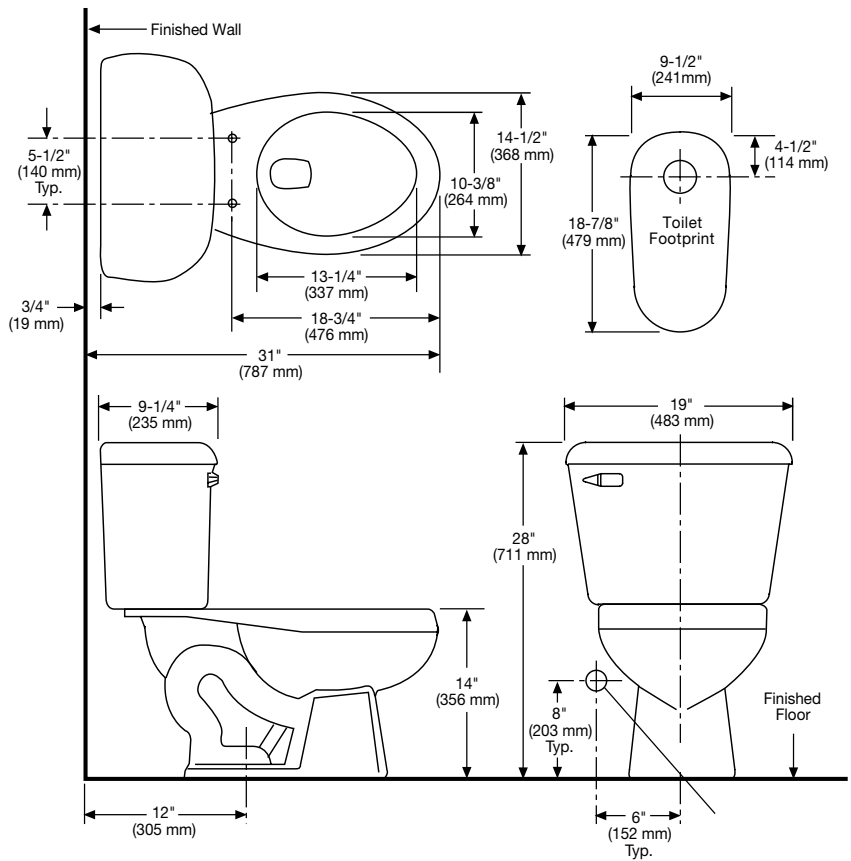


Specifications

Model #	Description	Codes/Standards
147-119	Elongated front, dual flush (1.1 gpf or 1.6 gpf) two-piece toilet	  

Specification	Description	Specification	Description
Material	Vitreous China	Trap Diameter	2-1/8"
Water Pressure Range	35 to 80 PSI	Trap Seal	2-1/8"
Flush System	Pressure Assist Vessel/Dual Flush Technology	Rough-in	12"
Water Usage	1.1 gpf / 4.0 lpf or 1.6 gpf / 6.0 lpf	Shipping Weight	Model 147 - 55 lbs. (25 kg)
Water Surface Area	10" X 12"		Model 119/119RH/119CL - 42 lbs. (19 kg)
MaP Rating	1000 grams	Warranty	Vitreous China - Limited Lifetime Tank Trim - Limited One Year

Technical Information



See our complete line of acrylic and vitreous china bathroom fixtures, plastic tank trim and plumbing products.

These dimensions are nominal and subject to change without notice.

Fixture performance and specifications meet or exceed ASME A112.19.2-2008/CSA B45.1-08 standards, and other state and local codes.



MADE IN USA