

1301 BPL Erie™

Wall-Mount, Rear Outlet, Elongated Front, *1.28 or 1.6 Toilet Bowl with Built-in Bedpan Lugs



Features

- Perfect for clinical applications
- Built-in bedpan lugs so bedpans stay secure and won't fall into bowl
- 1.28 or 1.6 Gpf / 4.86 or 6.05 Lpf low water consumption*
- 1-1/2" top spud for flush valve installation will accommodate many brands of flush valves
- High performance, high efficiency (HET)
- The Mansfield® limited lifetime warranty
- Available in White only






Elongated Front



Model 1301-BPL
Less toilet seat,
hardware and supply

Components

Model #	Description	Codes/Standards
1301-BPL	Wall-mount, rear outlet, elongated front toilet bowl with built-in bedpan lugs. Includes a 1-1/2" top spud for flush valve installation. Less carrier mounting system, wall bolts, caps, toilet seat and flush valve. White only.	  

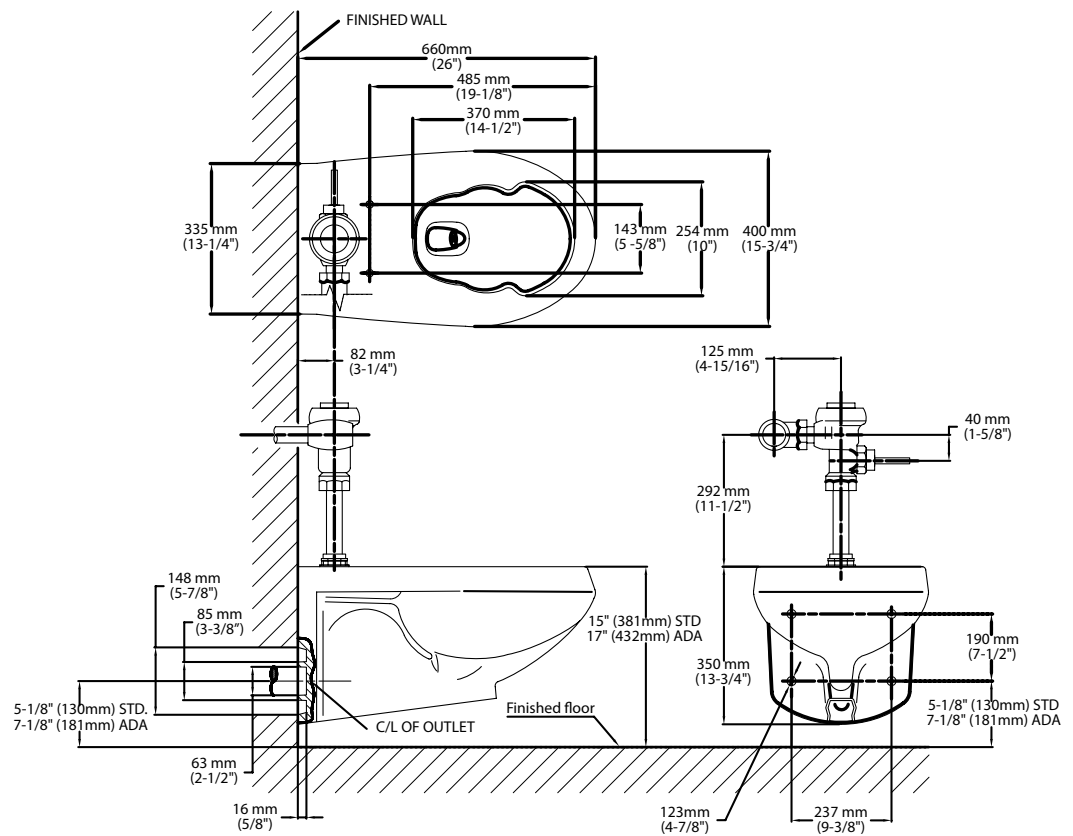
(*When using the proper 1.28 flushometer)

Specifications

Model #	Description	Codes/Standards
1301-BPL	Wall-mount, rear outlet, elongated front (*1.28 or 1.6 Gpf) toilet bowl with built-in bedpan lugs	

Specification	Description	Specification	Description
Material	Vitreous China	Trap Diameter	1-7/8"
Water Pressure Range	20 to 80 PSI	Trap Seal	2-1/8"
Flush System	Siphon Jet Technology	Rough-in	Rear Outlet
Water Usage	1.28 or 1.6 Gpf / 4.84 or 6.05 Lpf	Shipping Weight	Model 1301-BPL - 54 lbs. (25 kg)
Water Surface Area	8-1/2" x 10-1/2"	Warranty	Vitreous China - Limited Lifetime Tank Trim - Limited One Year
MaP Rating	1,000 grams		

Technical Information



See our complete line of acrylic and vitreous china bathroom fixtures, plastic tank trim and plumbing products.

(*When using the proper 1.28 flushometer.)

These dimensions are nominal and are subject to change without prior notice.

Fixture performance and specifications meet or exceed, ASME A112.19.2-2008/CSA B45.1-08 standards, and other state and local codes.

Engineered to dramatically meet or exceed all ANSI weight/load bearing requirements.

Meets or exceeds American Disabilities Act and ANSI A.117.1 requirements where installed so top of rim is 17" (432 mm) from the finished floor.