

# 3072 Medajean®

Rectangular, Clinical Sink, Vitreous China Vessel



## Features

- Specifically designed for clinical applications
- Blow out flushing action
- 20" W x 24-1/2" D
- 6.5 Gpf / 24.5 Lpf (when using the proper flushing valve)
- Optional stainless steel rim guard (installed in the front and sides)
- Waste outlet seal can be neoprene or graphite-felt
- The Mansfield® limited lifetime warranty
- Available in white



Model 3072  
Less flush valve

## Components

Model #	Description
3072	Vitreous china clinical sink. Less flushometer.
872	Optional stainless steel rim guard three-piece set, installed to the front and sides of the sink.



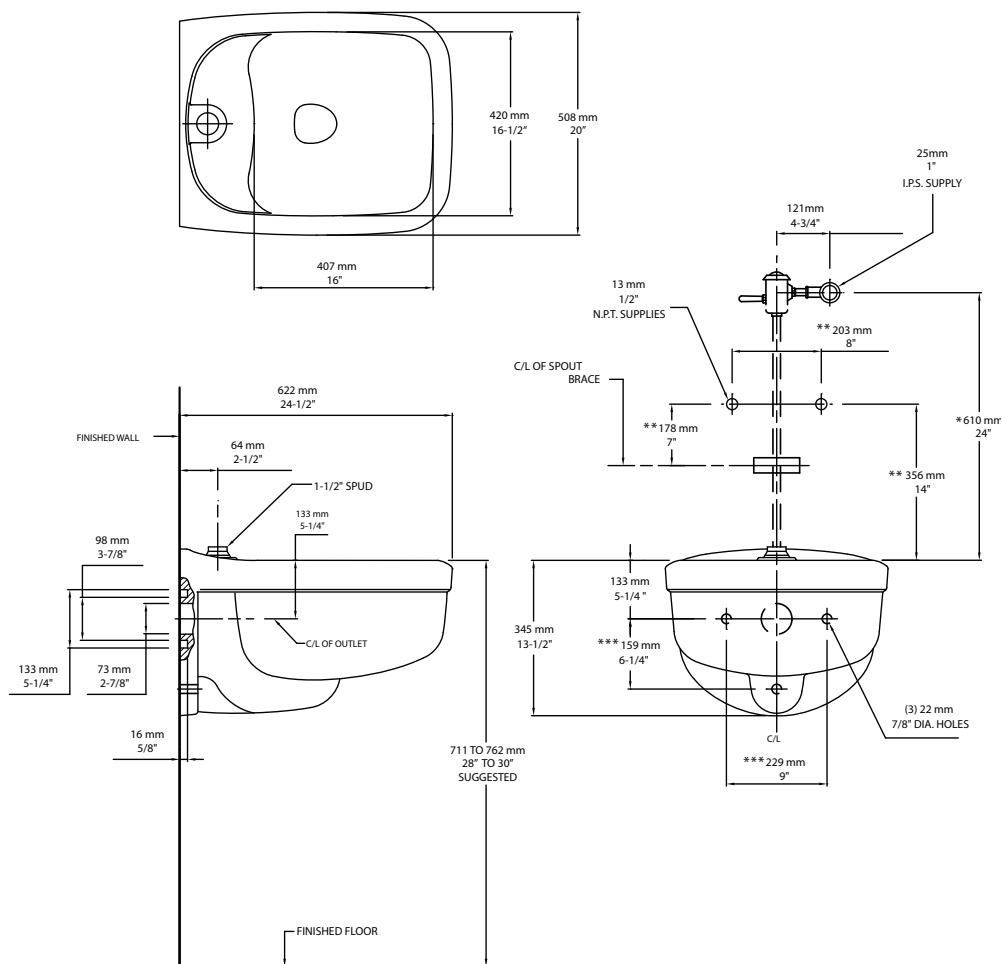
**MADE IN USA**

## Specifications

Model #	Description
3072	Rectangular, clinical sink (6.5 gpf/24.5 lpf)

Specification	Description	Specification	Description
Material	Vitreous China	Shipping Weight	Model 3072 - 68 lbs. (31 kg)
Warranty	Vitreous China - Limited Lifetime		

## Technical Information



See our complete line of acrylic and vitreous china bathroom fixtures, plastic tank trim and plumbing products.

These dimensions are nominal and subject to change without notice.

Fixture performance and specifications meet or exceed ASME A112.19.2-2008/CSA B45.1-08 standards, and other state and local codes.